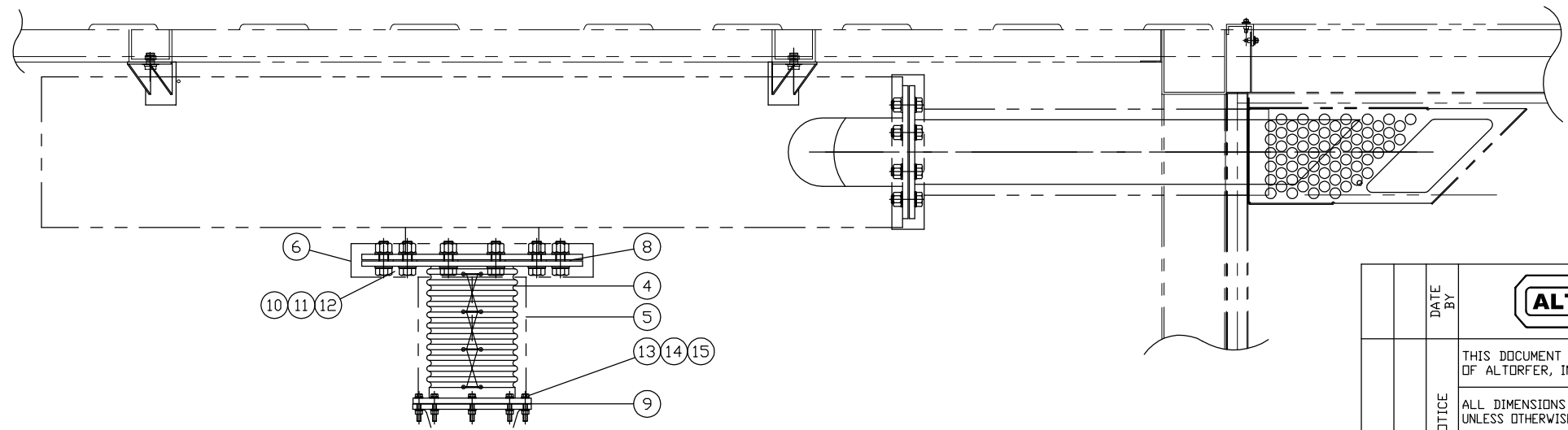
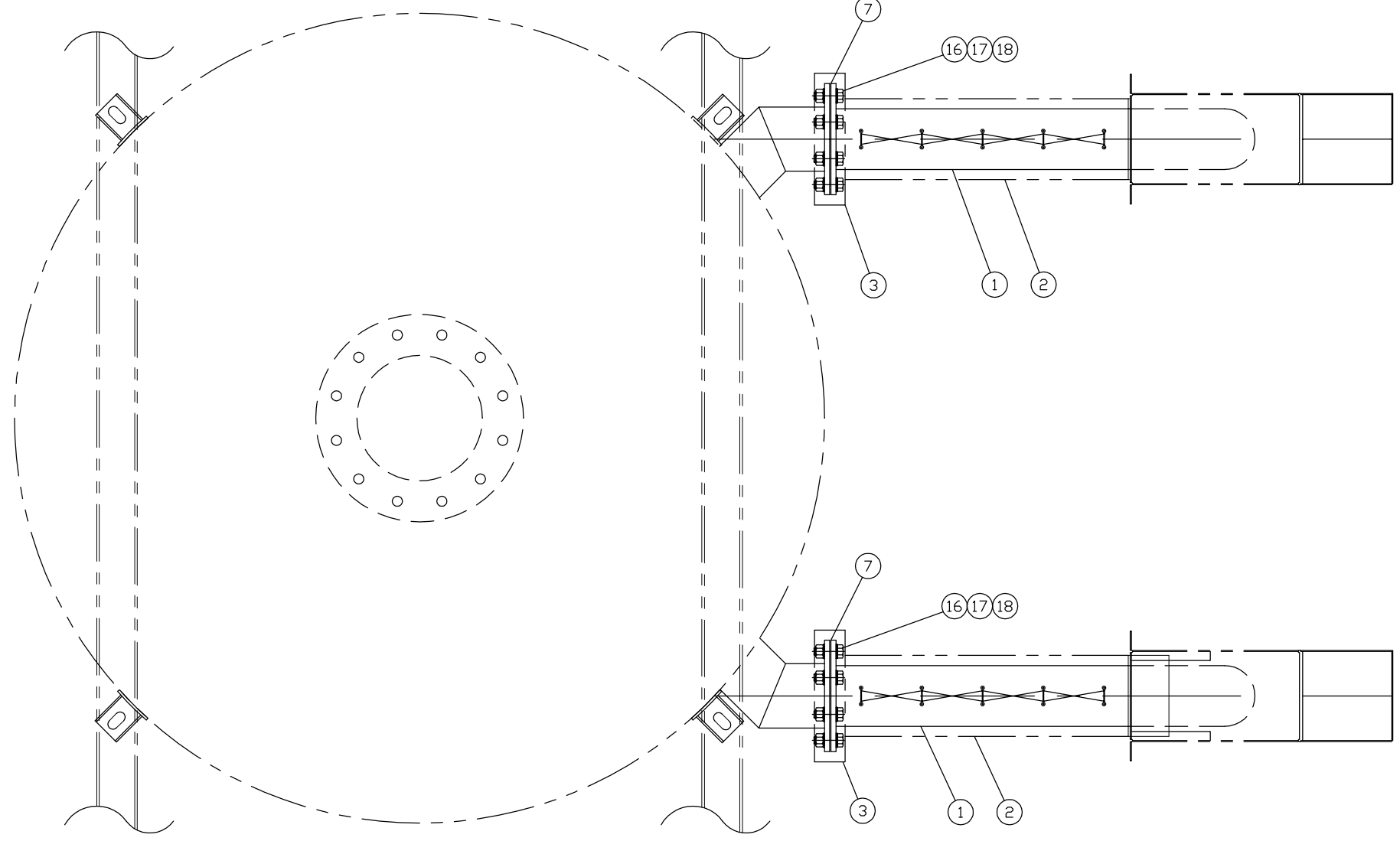


INCH 80A814

ITEM	QTY.	PART NO.	DESCRIPTION
1	2	81D101	EXHAUST EXTENSION ASSEMBLY
2	2	PI06HA31	EXHAUST BLANKET ASSEMBLY
3	2	FB06HA	EXHAUST FLANGE BLANKET ASSEMBLY
4	1	80D115	EXHAUST FLEX ASSEMBLY
5	1	FX08HA12	EXHAUST FLEX BLANKET ASSEMBLY
6	1	FB12HAXX	EXHAUST FLANGE BLANKET ASSEMBLY
7	2	GHT6	FULL FACE GASKET 6" HIGH TEMP
8	1	GHT12	FULL FACE GASKET 12" HIGH TEMP
9	1	5L-3773	GASKET 8" CAT FLANGE
10	12	65132	BOLT 7/8-9x2-1/2
11	24	509	WASHER 7/8
12	12	108	NUT 7/8-9
13	8	65036	BOLT 3/8-16x2
14	16	503	WASHER 3/8
15	8	102	NUT 3/8-16
16	16	65115	BOLT 3/4-10x2
17	32	508	WASHER 3/4
18	16	107	NUT 3/4-10



		<b>ALTORFER POWER SYSTEMS</b> 6315 W. FAUBER RD.      PHONE (309) 697-1234 BARTONVILLE, IL 61607      FAX (309) 282-7546			
		THIS DOCUMENT CONTAINS PROPRIETARY INFORMATION OF ALTORFER, INC. WITHOUT THE WRITTEN PERMISSION OF ALTORFER, INC., ANY COPYING OR OTHER USE EXCEPT THAT FOR WHICH IT WAS INTENDED IS PROHIBITED			
CHANGE NOTICE NO. 1	ALL DIMENSIONS IN INCHES UNLESS OTHERWISE SPECIFIED	FILE DF/80A	PROJECT REFERENCE APS800A C27 POWER MODULE		
	TOLERANCES: X.X ± 0.100 X.XX ± 0.060 X.XXX ± 0.005	THIRD ANGLE PROJECTION	SCALE/SHEET SIZE 1=10/C	DRAWN BY D. RICHARDSON	QUOTE NUMBER
	ANGULAR ± 1°		SHEET 1 OF 1	DATE 8/2/06	WORK ORDER NUMBER
	TITLE EXHAUST GROUP EXHAUST ASSEMBLY DETAIL			DRAWING NUMBER 80A814	