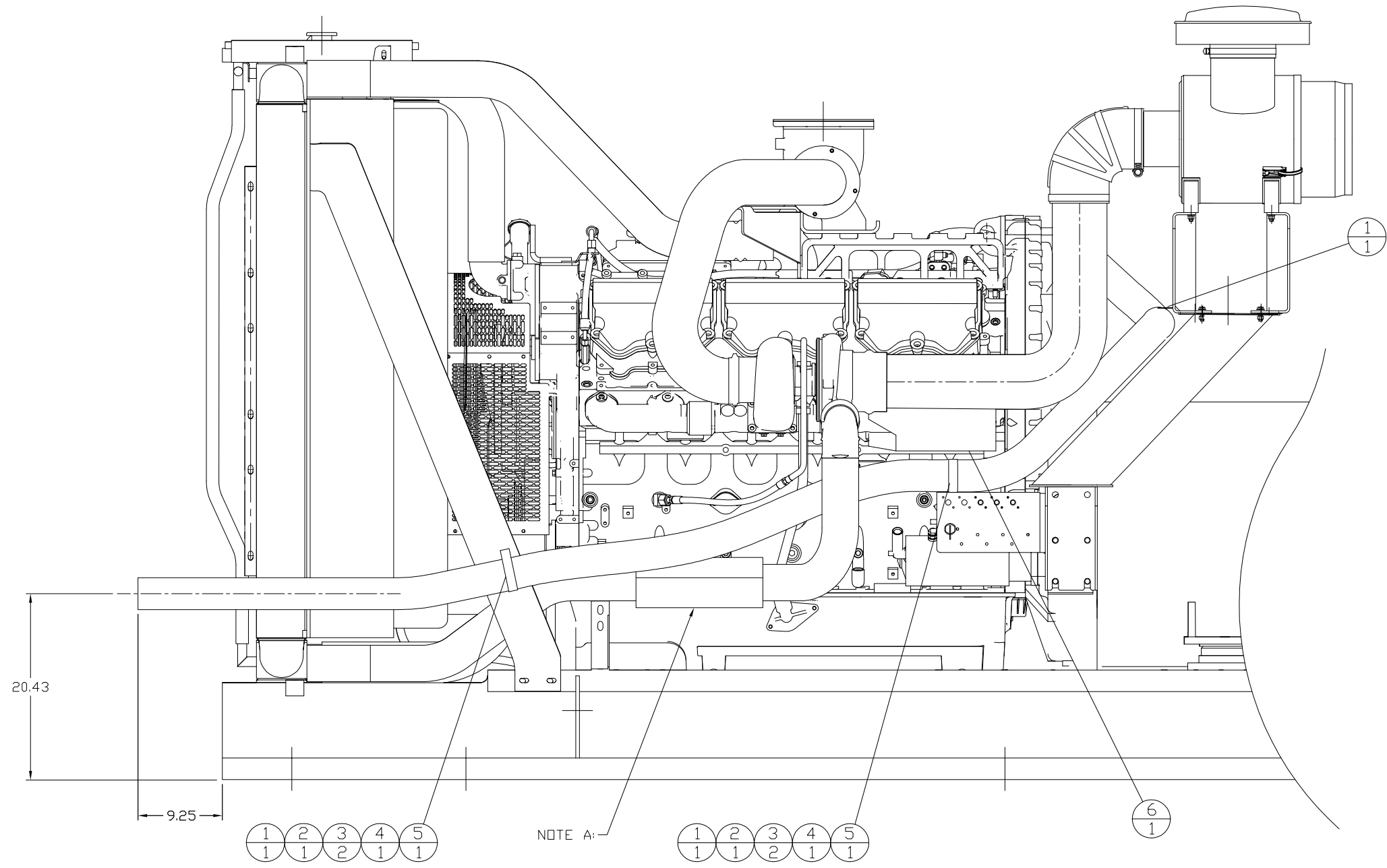


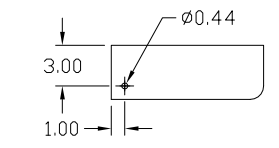
INCH 80A839

ITEM	QTY.	PART NO.	DESCRIPTION
1	3	204-1070	CLIP - LOOP
2	2	65033	BOLT 3/8-16 X 1.25
3	4	503	WASHER - FLAT 3/8
4	2	530	WASHER -LOCK 3/8
5	2	102	NUT 3/8-16
6	1	6N9091	SHIELD GP. - MANIFOLD



NOTE A: INSTALL TAKE-OFF ADEM HEAT SHIELD WRAP FROM RIGHT HAND EXHAUST

LEFT SIDE VIEW



TOP OF DC POWER DISTRIBUTION

DATE BY	<b>ALTORFER</b>			<b>ALTORFER POWER SYSTEMS</b>		
				6315 W. FAUBER RD. BARTONVILLE, IL 61607		PHONE (309) 697-1234 FAX (309) 282-7546
CHANGE NOTICE	THIS DOCUMENT CONTAINS PROPRIETARY INFORMATION OF ALTORFER, INC. WITHOUT THE WRITTEN PERMISSION OF ALTORFER, INC., ANY COPYING OR OTHER USE EXCEPT THAT FOR WHICH IT WAS INTENDED IS PROHIBITED					
	ALL DIMENSIONS IN INCHES UNLESS OTHERWISE SPECIFIED		FILE	PROJECT REFERENCE		
			DF/80A	APS800B C27 POWER MODULE		
	TOLERANCES: X.X ± 0.100 X.XX ± 0.060 X.XXX ± 0.005		THIRD ANGLE PROJECTION	SCALE/SHEET SIZE 1=10/C	DRAWN BY D. RICHARDSON	QUOTE NUMBER
ANGULAR ± 1°			SHEET 1 OF 1	DATE 12/8/08	WORK ORDER NUMBER	
TITLE	FUMES DISPOSAL GROUP FUMES HOSE ROUTING				DRAWING NUMBER 80A839	
2	1	NO.				